

## EXCAVATION OPPORTUNITY

Have you ever wanted to experience an archaeological excavation but could never take enough time away or afford the expense? If you answered yes to either of these questions you may be interested in the following opportunity.

This September, for only the second time since 2013 we will be for working at the Champagne Spring Ancestral Puebloan community in Southwest Colorado. This site is one of the largest known tenth-century centers in the Northern Southwest and consists of approximately 300 rooms and 60 kivas, including a great kiva, a prehistoric road, and an unusual roadside shrine.

**There will be two excavation sessions; September 4-7 (Labor Day weekend), and September 11-14.**

**The cost of each session is only \$95.00 which** helps pay for some of the associated costs of conducting these sessions, processing artifacts, dating materials, artifact curation, etc.

We'll be working at the South Ridge village again and we have some very exciting study goals this year. Little excavation has occurred on this site. In the summer of 2019, excavations were focused on two rooms of a multi-occupation house and an unusual-shaped prehistoric road shrine.

Training will focus on archaeological field techniques, pottery analysis, and field documentation. The town of Dove Creek is only seven miles from the Champagne site where there is a motel, a couple restaurants, and a grocery store. **Camping on-site is free.** There are no plug-ins for electricity however we do provide portable toilets, potable water, and shade devices. An evening lecture and artifact show-and-tell session is planned and we'll have a prehistoric pottery workshop that will provide you with enough information to type local ceramics and identify some non-local trade wares.

Participants need to supply their own food, equipment (trowel, gloves, hat, sturdy shoes) and transportation.

For more information go to the Four Corners Research website at:

<http://www.fourcornersresearch.com/>

**You can download a sign-up packet there!**

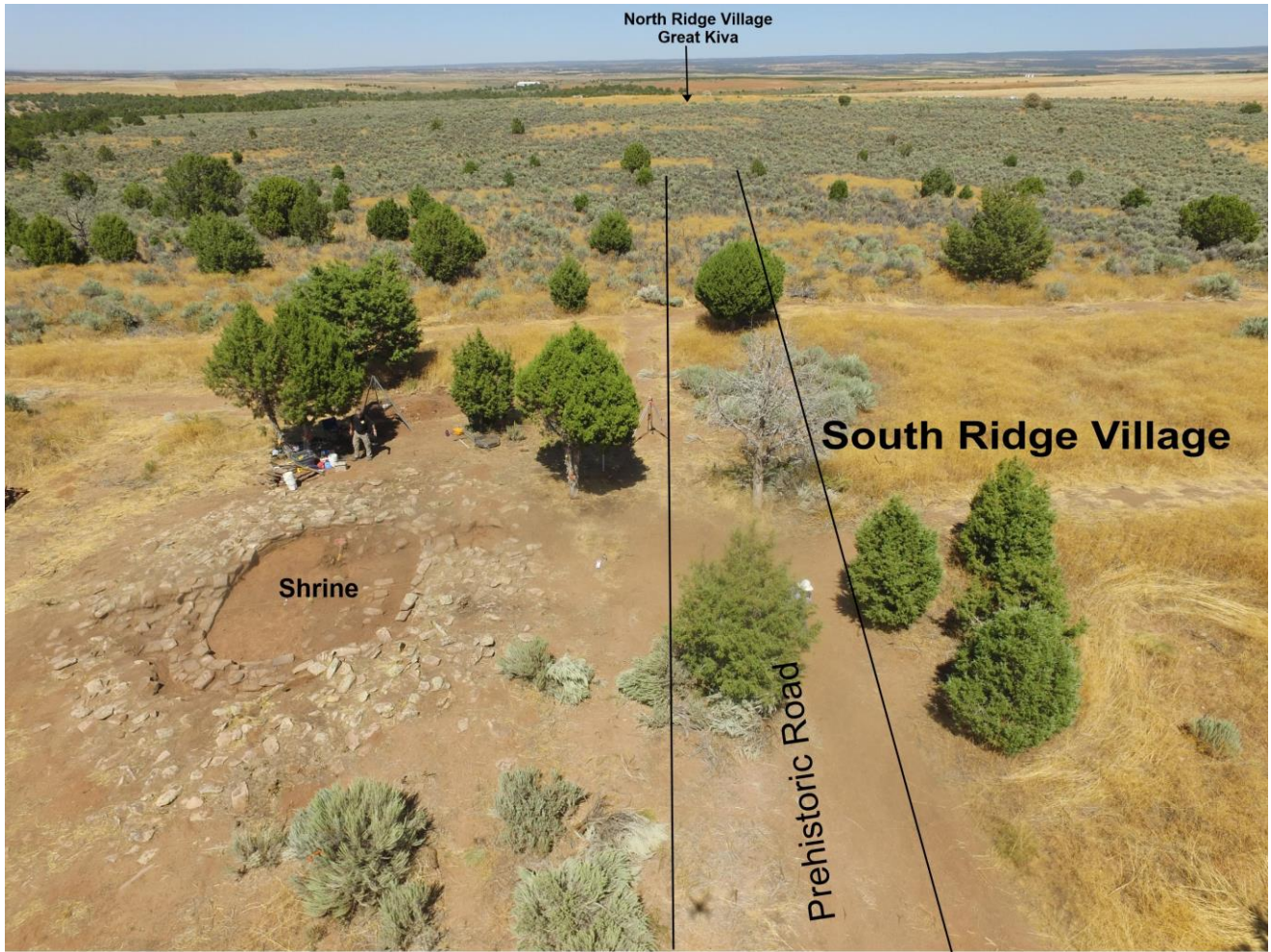


Figure 1 - Unusual shrine along prehistoric road across the Champagne Spring South Ridge village leading toward the great kiva at the North Ridge village